



Quick Move-in Home

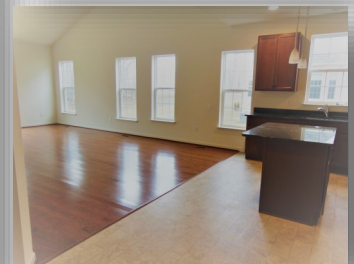
Preserve at Robinson Farms

Savannah II—Twin Home

Homesite 249

509 Colbert Road
Townsend, DE 19734

\$272,643



Handler Homes

Quality Homes. Lasting Value.

For more information contact:

Donna Wagenseller
Community Sales Manager
Phone: 302-449-7363
Email: dwagenseller@handlerhomes.com

GPS: 606 Courtly Road, Townsend, DE 19734



3 Bedrooms & Loft | 2.5 Bathrooms | 2-car Garage | 2,116 Sq. Ft. - 2 Stories

Features

- ◆ 1st Floor Owners' Suite, which includes 2 large walk-in closets
- ◆ Upgraded kitchen includes granite countertops & island with overhang for extra seating
- ◆ Full 2-car garage with extra storage
- ◆ 2nd floor includes 2 bedrooms, a full bath, a loft overlooking the great room & an additional loft area
- ◆ Appoquinimink School District
- ◆ 10 x 10 deck off great room

HandlerHomes.com



Cannot be combined with any other offers. Prices, financing, availability and offers subject to change without notice.
Commission paid at settlement. See Sales Representative for details. Photo is rendering of similar model REV: 021717

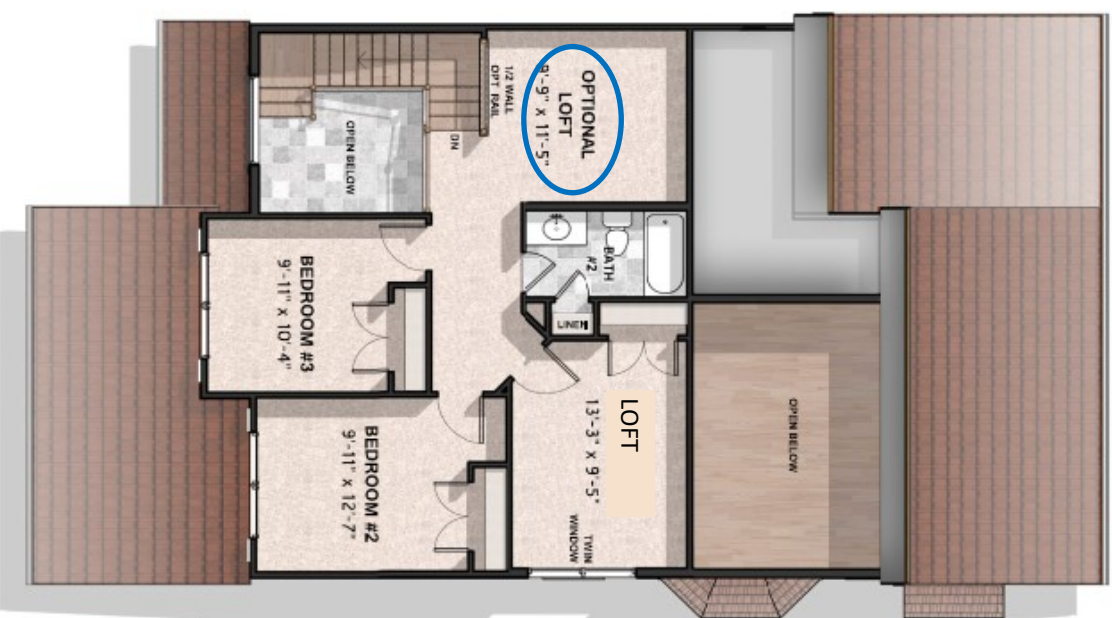
THE SAVANNAH II

THE PRESERVE AT ROBINSON FARMS

PLANS WITH OPTIONS



SAVANNAH II FIRST FLOOR
WITH OPTIONAL 5' SHOWER, FIRE-
PLACE AND BAY WINDOW



SAVANNAH II SECOND FLOOR
WITH OPTIONAL
LOFT

HANDLER
HOMES • EST 1975

Drawing is an artist's concept, not to scale, and should not be relied upon for any type of binding agreement. Some options may be shown. Floorplans, Elevations & Options may vary per community. ALL DIMENSIONS ARE APPROXIMATE. Please see our Sales Professional for specific details. Builder reserves the right to change prices, specifications and standard features without notice.

Revision date: 03/09/2016 C 2016